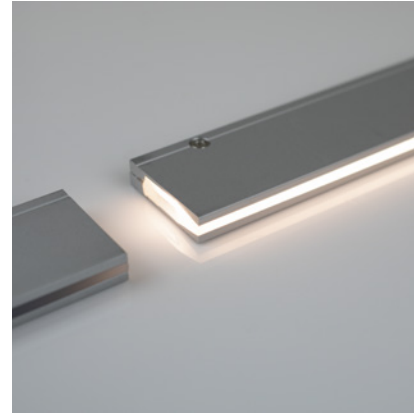


Linear

GROOVE Light IP67 Fixture Guide

KKDÖ

Indoor/Outdoor | Recessed | Output up to 51lm/m (16lm/ft)

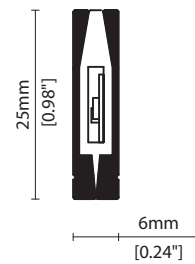


Key applications

- ✓ Architectural detail
- ✓ Cabinet/Furniture
- ✓ Exterior
- ✓ Floor
- ✓ Orientation lighting

Key features

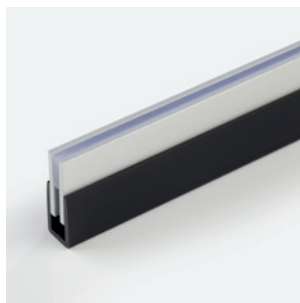
- ✓ Custom lengths
- ✓ Decorative
- ✓ Diffusion: Homogenous
- ✓ Direct view
- ✓ IP67
- ✓ Thin light line



MOUNTING METHODS



KKCP-16 Clip



KKCH-01 PVC channel

Linear

GROOVE Light IP67

Specification sheet



Dimensions	H25/W6/L100-1000mm (H0.98/W0.24/L3.94-39.37in)
PCB Cut-point	100mm increment/1000mm max (3.94in increment/39.37in max)
LED Pitch	10mm - 100LED/m (0.39in - 30.5LED/ft)
Chip	s-line k-line
Cover/Optics	115° (Diffused cover)
CCT	s-line: 2300K/2500K/2700K/3000K/3500/4000K k-line: 2300K/2500K/2700K/3000K/3500/4000K
LED binning	s-line: 2-step MacAdam ellipse k-line: 3-step MacAdam ellipse
CRI	≥90
Lifetime	50,000 hours @ 25°C (50,000 hours @ 77°F)
Operating temp	T _a = -25 to 50°C (T _c max = 72°C) T _a = -13 to 122°F (T _c max = 162°F)
IP Rating	IP67
Finish	Silver anodised
Mounting	Recessed mounting via clips or channel (no flange)
Power feed	Sheathed Hardwire tails
Control	0-10V/1-10V/DMX/DALI



LED Grading Key

Exclusive Grade

s s-line*	*KKDC tuned CCT range
2-step CCT range	

Base Grade

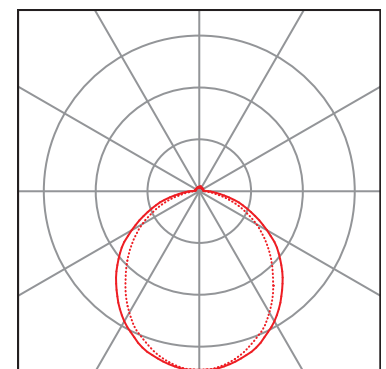
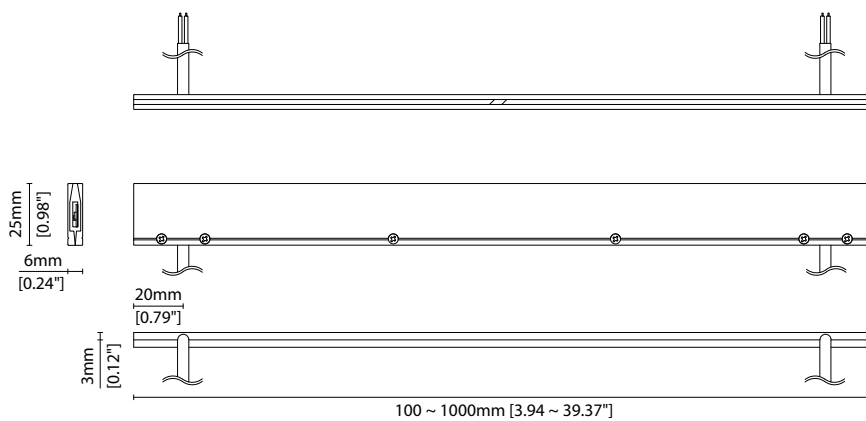
k k-line	3-step commercial range Energy Star CCTs
-----------------	---

Power consumption	Supply voltage	Supply current
12W/m (3.66W/ft)	24V DC	0.5A/m (0.16A/ft)

Performance Data (3000K)

	R1	R2	R3	R4	R5	R6	R7	R8	R9	R10	R11	R12	R13	R14
k-line	94	97	98	93	93	96	92	83	60	93	94	82	95	99

Diffused Cover		CRI	R9	Rf	Rg
s-line	51lm/m (16lm/ft) 4lm/W	93	62	-	-
k-line	48lm/m (14lm/ft) 4lm/W	92	60	89	97



— C0 / C180 cd / 1000 lm C90 / C270

Data derived from independent UKAS/IESNA LM-79-08 accredited testing of production samples.

GROOVE Light IP67

Code Table



FIXTURE

Model	Finish	Cover	Grade ¹	LED	Colour (CCT)	Length Availability ²	IP	Cable Length	Power Feed ³	Input	
GROOVE Light IP67	GF	Silver Anodised SA	Diffused C	s	104	2300K 23	m 100-1000mm 100mm increments	IP67 67	300mm 0300 (11.81in)	Single ø4.3mm sheath tail S00A	DC 24V g
						2500K 25					
						2700K 27	i 3.94-39.37in 3.94in increments				
						3000K 30					
						3500K 35					
	4000K 40	(Specify length code OR total run length)									

¹ Refer to **LED Grading Key** on **Specification sheet** page

² Refer to **Length Availability List** or enter total run length instead of length code

³ Refer to **Power Feed Options** on **Options** pages

Code Example:

GF	-	SA	-	C	-	k	-	104	-	30	-	m	-	500	-	67	-	0300	-	S00A	-	g
GROOVE Light IP67		Silver Anodised		Diffused		k		104		3000K		500mm		IP67		300mm/11.81"		Single ø4.3mm sheath tail		S00A		24V DC

ACCESSORIES

Mounting Accessories

KKCP-16	Clip
KKCH-01	PVC Channel

* Refer to **Mounting accessories** on **Accessories** pages

PSU/Driver

0-10V/1-10W/DALI/DMX

* Refer to **Driver/PSU Options** page for details or provide requirement and KKDC to offer the suitable option

LED ENGINE VARIANTS (LED STRIP TYPE)

Luminaire	LED	Lumen/m	Lumen/ft	W/m	W/ft	Spec Doc	Length	Increment
GROOVE Light	104	24	7	12	3.65	GROOVE Light	100-1000mm (3.94-39.37in)	100mm (3.94in)
GROOVE Light IP67	104	51	16	12	3.66	GROOVE Light IP67	100-1000mm (3.94-39.37in)	100mm (3.94in)
GROOVE Light RGB	101	Red 2 Green 10 Blue 3 RGB 15	Red 0.6 Green 3 Blue 1 RGB 5	21.6	6.58	GROOVE Light RGB	100-1000mm (3.94-39.37in)	100mm (3.94in)

* Performance data: s-line, diffused cover, 3000K

Linear

GROOVE Light IP67

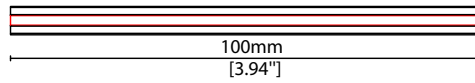
Length Availability List



Length Code		Fixture Length ¹		LED Strip ²		End Cap Dimension		Wattage (W)	Output (lm)
Metric	Imperial(US)	Metric	Imperial(US)	Metric	Imperial(US)	Metric	Imperial(US)		3000K (Test Data)
m0100	i0004	100mm	3.94in	100mm	3.94in	N/A	N/A	1.20	5
m0200	i0008	200mm	7.87in	200mm	7.87in	N/A	N/A	2.40	9
m0300	i0012	300mm	11.81in	300mm	11.81in	N/A	N/A	3.60	14
m0400	i0016	400mm	15.75in	400mm	15.75in	N/A	N/A	4.80	18
m0500	i0020	500mm	19.69in	500mm	19.69in	N/A	N/A	6.00	23
m0600	i0024	600mm	23.62in	600mm	23.62in	N/A	N/A	7.20	27
m0700	i0028	700mm	27.56in	700mm	27.56in	N/A	N/A	8.40	32
m0800	i0031	800mm	31.50in	800mm	31.50in	N/A	N/A	9.60	36
m0900	i0035	900mm	35.43in	900mm	35.43in	N/A	N/A	10.80	41
m1000	i0039	1000mm	39.37in	1000mm	39.37in	N/A	N/A	12.00	45

¹ Actual total overall length of light fixture (LED strip + end caps + void/wire hole)

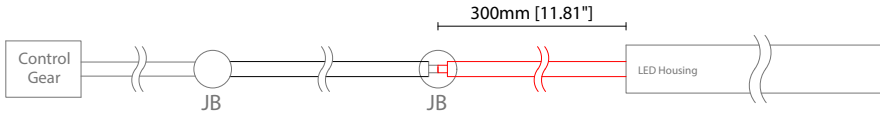
² Actual length of PCB strip



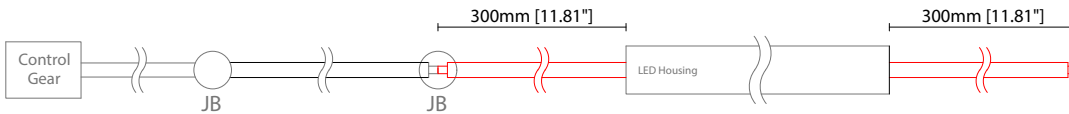
POWER FEED OPTIONS

* Options are an integral part of the fixture ordering codes. Please refer to **Code Table** pages.

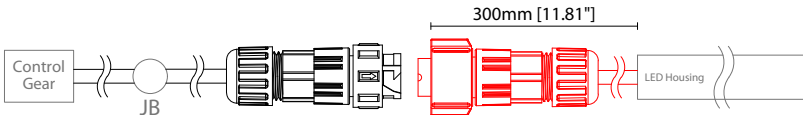
0300 S00A 300mm (11.81") Single ø4.3mm sheath tail



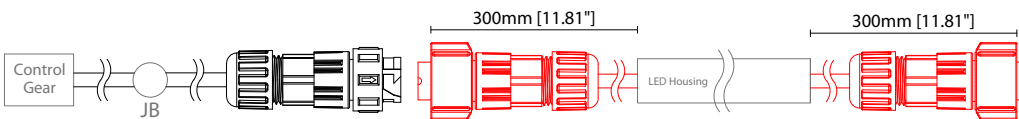
0300 D00A 300mm (11.81") Double ø4.3mm sheath tail



0300 S67A 300mm (11.81") Single ø4.3mm sheath IP67 connector

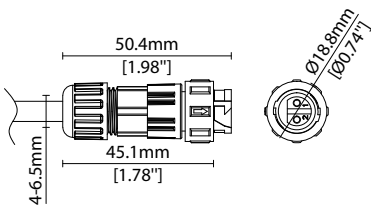


0300 D67A 300mm (11.81") Double ø4.3mm sheath IP67 connector

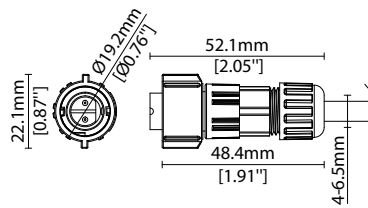


IP67 2 Pin Connector

Female connector
2 PIN (IP67)



Male connector
2 PIN (IP67)

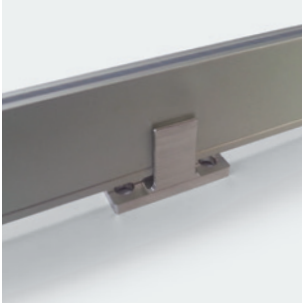


Key

Control Gear Power supply, sub-controllers & control systems

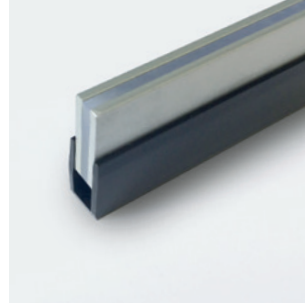
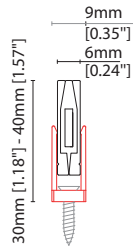
JB Junction box / cable connection

MOUNTING ACCESSORIES



KKCP-16 (1no.)

Clip (allow 2 per metre/40in)
Anodised aluminium finish
W9/H30-40mm (W0.35/H1.18-1.57")

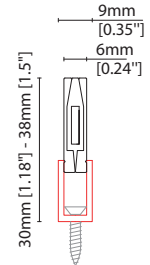


KKCH-01 *

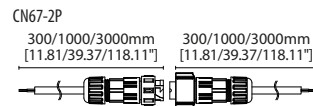
PVC channel (minimum 200mm (7.87in) PVC channel per 500mm (19.69in) of GROOVE Light)
Black PVC finish

W9/H30-38mm (W0.35/H1.18-1.5")

* Specify length of channel in 1000mm (39.37in) increments (to be cut on site further as required)



POWER FEED



CN67-2P-0300 300mm (11.81in) pair
CN67-2P-1000 1000mm (39.37in) pair
CN67-2P-3000 3000mm (118.11in) pair

IP67

2 PIN male + female connector set

EXTERIOR JUNCTION BOXES



KKJB-07

IP67 Slim J-Box
(including type A,B,C,D bushings)



KKJB-07R

Potting resin for IP67 Slim J-Box

Linear

GROOVE Light IP67 Accessories

KKDC

KKDC CONTROL



IP20
Plastic housing
L170/W59/H29mm
(L6.69/W2.32/H1.14in)

KKDM-06 1-10V

visDIM dimmable sub-controller
(4 x 8A max @ 12-36V)



IP20
Plastic housing
L170/W53.4/H28mm
(L6.69/W2.10/H1.10in)

KKSC-05 DMX

visDIM dimmable sub-controller
(4 x 5A max @ 12-36V)



IP20
Plastic housing
L170/W59/H29mm
(L6.69/W2.32/H1.14in)

KKDL-02 DALI

visDIM dimmable sub-controller
(4 x 8A max @ 12-36V)



IP20
Plastic housing
L166/W53.4/H23mm
(L6.54/W2.10/H0.91in)

KKDL-03 DALI

visDIM dimmable sub-controller
(4 x 5A max @ 12-36V)

AVAILABLE PSU OPTIONS

Control Mode	PSU (Order Code)	Input Voltage AC	Output Voltage DC	Rated Output Current	Rated Power	Dim %	IP Rating
Switched	CEN-60-24	90-295V	24V	2.5A	60W	-	IP67
	HLG-60H-24	90-305V	24V	2.5A	60W	-	IP67
	HLG-100H-24	90-305V	24V	4.0A	100W	-	IP67
	HLG-150H-24	90-305V	24V	6.3A	150W	-	IP67
	HLG-240H-24	90-305V	24V	10A	240W	-	IP67
0-10V (1-10V)	PWM-40-24	90-305V	24V	1.67A	40W	100-0.15 (100-10)	IP67
	PWM-60-24	90-305V	24V	2.5A	60W	100-0.15 (100-10)	IP67
	PWM-90-24	90-305V	24V	3.67A	90W	100-0.15 (100-10)	IP67
	PWM-120-24	90-305V	24V	5.0A	120W	100-0.15 (100-10)	IP67
DALI	LIN100A1	120-277V	24V	1A per channel	100W	100-0.1	IP66/IP40
DMX RGB	LIN100A1	120-277V	24V	1.33A per channel	100W	100-0.1	IP66/IP40
DMX RGBW	LIN100A1	120-277A	24V	1A per channel	100W	100-0.1	IP66/IP40

Flicker Free Options - Combination of PSU+ sub-controller

Control Mode	PSU (Order Code)	Sub-controller (Order Code)	Input Voltage AC	Output Voltage DC	Rated Output Current	Rated Power	Dim %	IP Rating PSU/ Sub-controller
0-10V or 1-10V	CEN-60-24	KKDM-06	90-295V	24V	2.5A	60W	100-0.9	IP67/IP20
	HLG-60H-24	KKDM-06	90-295V	24V	2.5A	60W	100-0.9	IP67/IP20
	HLG-100H-24	KKDM-06	90-295V	24V	4.0A	100W	100-0.9	IP67/IP20
	HLG-150H-24	KKDM-06	90-295V	24V	6.3A	150W	100-0.9	IP67/IP20
	HLG-240H-24	KKDM-06	90-295V	24V	10.0A	240W	100-0.9	IP67/IP20
DALI	CEN-60-24	KKDL-02/03	90-295V	24V	2.5A	60W	100-0.1	IP67/IP20
	HLG-60H-24	KKDL-02/03	90-305V	24V	2.5A	60W	100-0.1	IP67/IP20
	HLG-100H-24	KKDL-02/03	90-305V	24V	4.0A	100W	100-0.1	IP67/IP20
	HLG-150H-24	KKDL-02/03	90-305V	24V	6.3A	150W	100-0.1	IP67/IP20
	HLG-240H-24	KKDL-02/03	90-305V	24V	10.0A	240W	100-0.1	IP67/IP20
DMX RGB	CEN-60-24	KKSC-05	90-295V	24V	2.5A	60W	100-0.9	IP67/IP20
	HLG-60H-24	KKSC-05	90-305V	24V	2.5A	60W	100-0.9	IP67/IP20
	HLG-100H-24	KKSC-05	90-305V	24V	4A	100W	100-0.9	IP67/IP20
	HLG-150H-24	KKSC-05	90-305V	24V	6.3A	150W	100-0.9	IP67/IP20
	HLG-240H-24	KKSC-05	90-305V	24V	10.0A	240W	100-0.9	IP67/IP20

¹ The items shown above cover the most frequently used specification but does not exhaust the possible options

² PSU and/or driver can be chosen from the table, or KKDC may recommend the best option upon receipt of the controls requirement and installation environment

³ Electrical shop drawing will include detailed information of PSU and relevant control drivers

⁴ Cut sheets are available on the controls section of www.kkdc.lighting or upon request